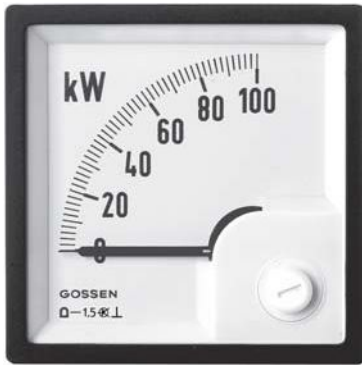


Basic Series • Square Panel Meters

For Active Power or Reactive Power



DLMQB 96

Moving-coil movement, 90° scale white, imprint black
Narrow front frame matt black per DIN 43718, anti-glare glass

Front Dimensions mm Type	96 x 96 DLMQB 96
Scale Length mm Accuracy Class Max. Weight (standard model) Max. Operating Voltage Test Voltage Front Housing-Panel Protection Input Meter	97 1.5 0.56 kg 600 V 5.8 kV IP 52 1 mA

Description

Analog panel meter with core-magnet moving-coil movement and built in power converter for active and reactive power. Depending upon type of system and power, the power converter consists of one, two or three multipliers. The multipliers function in accordance with the TDM process (time division multiplier). The output signals from the multipliers are added and fed to the moving coil mechanism.

Display

Scale Division	Coarse-fine
Pointer	Beam pointer with edge-knife

Mechanical Design

Housing Material	Polycarbonate, self-extinguishing and drip-proof per UL94V-0
Mounting Fasteners	Screw Clamp
Scale	Interchangeable Scales ⇒ Scales may only be replaced under voltage-free conditions!
Replaceable	Front frames and glass windows ⇒ May only be replaced under voltage-free conditions
Terminals	M4 screw terminals with self-lifting terminal clips. Screws can be turned with a cross-head or standard screw drivers.
Contact Protection	Finger-safe terminal cover included

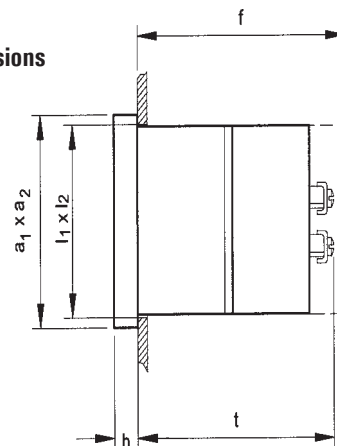
Power Consumption

Connection	Power Consumption
Current Path Voltage Path	approx. 0.2 VA ≤ 4.3 VA

Reference Conditions

Reference Quantities	Reference Conditions
Ambient Temperature Position of Use Frequency Current Components Voltage Components Warm-Up Time Other	23°C ± 2°C control panel vertical ± 1° 50 Hz ± 2 % 20 ... 120% of rated value 98 ... 102% of rated value ≥ 5 min. DIN EN 60051

Basic Dimensions




Front in mm	Nominal Dimensions		Cutout Dimensions, mm $l_1 \times l_2$	Installation Depth Including Terminals (t), mm M4	Installation Depth Including Full Covers (f), mm
	$a_1 \times a_2$	h			
96 x 96	96 x 96	5.5	$92^{+0.8} \times 92^{+0.8}$	117	126

Basic Series • Square Panel Meters

For Active Power or Reactive Power



Moving-coil movement, 90° scale white, imprint black
Narrow front frame matt black per DIN 43 718, anti-glare glass

Type	Oder No.	Front Dimensions 96 x 96 mm
DLMQB 96 – P1 W	55004 73100 B	 <p style="text-align: right;">DLMQB 96</p>
DLMQB 96 – P3 Wg	55004 73110 B	
DLMQB 96 – P3 Wu	55004 73120 B	
DLMQB 96 – P4 Wg	55004 73130 B	
DLMQB 96 – P4 Wu	55004 73140 B	
DLMQB 96 – P1 B	55004 73150 B	
DLMQB 96 – P3 Bg	55004 73160 B	
DLMQB 96 – P3 Bu	55004 73170 B	
DLMQB 96 – P4 Bg	55004 73180 B	
DLMQB 96 – P4 Bu	55004 73190 B	

Ordering Example:

DLMQB 96 P4 Wu 0–60 kW 400 V 100/5 A

Type ————
Power 4-Wire ————
Unbalanced Load Active Power
(Unbalanced Load Reactive Power) ————
Range ————
Nominal Voltage ————
Transformer ————

Notes concerning the Determination of Measuring Ranges

The upper measuring range should be a standard value per DIN 43 701: 1 – 1.2 – 1.5 – 2 – 2.5 – 3 – 4 – 5 – 6 – 7.5 – 8 and corresponding powers of ten. The upper measuring range value must lie within a range of 0.5 to 1.2 times apparent power.

Apparent power P_s is calculated from the primary values from the current and voltage transformers:

- Single-Phase AC $P_s = U \times I$
- Three Phase $P_s = U \times I \times \sqrt{3}$

where U equals phase-to-phase voltage.