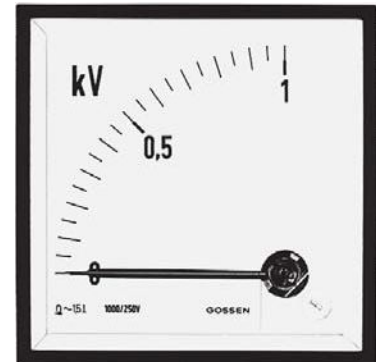


## Vario-Series • Square Panel Meters

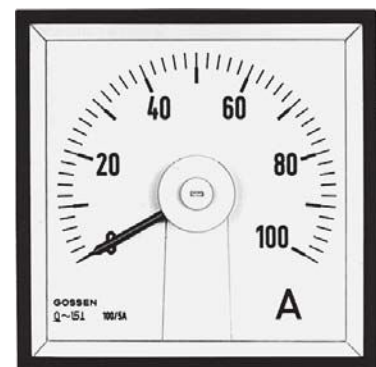
For Alternating Current or Alternating Voltage 40 ... 50 ... 10 000 Hz



Moving-coil movement with rectifier, **90° or 240° scale**  
Narrow front frame per DIN 43 718, matt black



V-PQS 96



V-PQ 96-250

### Technical Data

Front Dimensions mm	48 x 48	72 x 72	96 x 96	144 x 144
Type (90° Scale)	PQS 48 W	V-PQS 72	V-PQS 96	PQS 144
Scale Length mm	40	66	94	143
Type (240° Scale)	V-PQ 48-250	V-PQ 72-250	V-PQ 96-250	PQ 144-250
Scale Length mm	73	113	151	235
Class	1.5	1.5	1.5	1.5
Weight approx. (90° / 240°) (kg)	0.08 / 0.16	0.2 / 0.2	0.25 / 0.25	0.6 / 0.65
Operating Voltage	300 V	600 V	600 V	600 V
Test Voltage	3.5 kV	5.8 kV	5.8 kV	5.8 kV
Front Housing-Panel Protection	IP 52	IP 52	IP 52	IP 52
Fasteners (see next page)	leaf spring	screw clip S	screw clip S	screw clip G
Housing Material	polycarbonate	polycarbonate	polycarbonate	sheet metal
Interchangeable Scale	yes	yes	yes	no

### Description

Analog panel meter with moving-coil movement and rectifier

### Display

Scale Division Coarse-fine  
Pointer Beam Pointer with knife-edge

### Mechanical Design

Housing Material Polycarbonate, self-extinguishing and drip-proof per UL 94 V - 0 or sheet metal housing (see above).

Sheet metal housing available as option for type V-PQS 72, V-PQS 96, V-PQ 72-250 and V-PQ 96-250.

Replaceable Glass windows, front frames and scales (interchangeable scales not available for panel meters with front panel dimensions of 144 x 144 mm)  
⇒ May only be replaced under voltage-free conditions!

Terminals M4 screw terminals with self-lifting terminal clips. Screws can be turned with a cross-head or standard screw drivers

Contact Protection Available as option

### Voltage Drop / Power Consumption

Voltage drop with measuring range < 100 mA: approx. 1.2 V

Power consumption with measuring range ≥ 100 mA: approx. 0.15 VA

### Reference Conditions

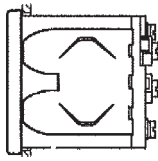
Reference Quantities	Reference Conditions
Wave Shape	sine, distortion factor ≤ 1%
Frequency	50 Hz ± 2 %
Ambient Temperature	23 °C ± 2 °C
Position of Use	control panel vertical ± 1°
Other	DIN EN 60 051

# Vario-Series • Square Panel Meters

For Alternating Current or Alternating Voltage 40 ... 50 ... 10 000 Hz

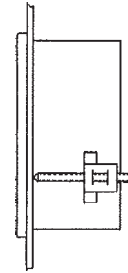


## Leaf Spring



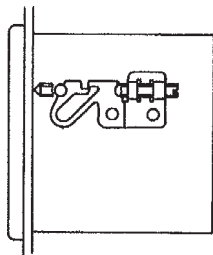
Control panel thickness 1 to 3 mm.  
For size 48 x 48 mm, not available for Mauell-Grid.  
Also available as option for sizes 72 x 72 and 96 x 96 mm.

## Screw Clip S



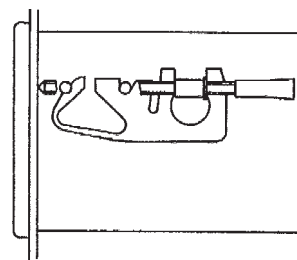
Control panel thickness 1 to 25 mm.  
Special screw clamp M4 required for size 72 x 72 and 96 x 96 mm.  
Also available as option for size 48 x 48 mm, not available for Mauell-Grid.

## Screw Clip G



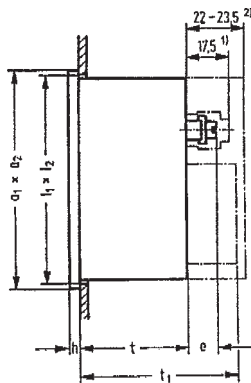
Control panel thickness 1 to 32 mm.  
Special screw clamp M4 required for size 144 x 144 mm.

## Fastener B DIN 43 835



Control panel thickness 1 to 40 mm.  
Screw clamp M4 as option for:  
Sheet metal housings 72 x 72 and 96 x 96 mm with cone head rivets and size 144 x 144 mm.

## Basic Dimensions



## Drawings to Scale (on request)

0101A258 for size 48 x 48 mm  
0101A259 for sizes 72 x 72 and 96 x 96 mm  
0101A261 sheet 1 for size 144 x 144 mm

## Dimensions for separated Saturation Current Transformer

80 x 55 x 31 mm (L x B x H)

## Drawing to Scale (on request)

1303A1839H0

## Ordering Example

Panel meter 96 x 96 mm  
Scale 240°  
0 ... 40 V Alternating voltage

Type <b>V-PQ 96-250</b>	Order No. <b>1605W, DC40</b>
----------------------------	---------------------------------

Front Dimensions mm	Nominal Dimensions		Cutout Dimensions $l_1 \times l_2$	Installation Depth		Terminals	
	$a_1 \times a_2$	h		t	$t_1$	M4 e	$\geq 100$ mA M3 e
48 x 48	48 x 48	5	$45^{+0.6} \times 45^{+0.6}$	43.5	$61.5^{3)}$	12.5	5.5
72 x 72	72 x 72	5	$68^{+0.7} \times 68^{+0.7}$	43.5	–	12.5	–
96 x 96	96 x 96	5	$92^{+0.8} \times 92^{+0.8}$	43.5	–	12.5	–
144 x 144	144 x 144	8	$138^{+1} \times 138^{+1}$	44.5	–	12.5	–

1) Single terminal cover

2) Overall terminal cover (22 mm for panel meters with front panel dimensions of 48 x 48 mm only)

3)  $\geq 100$  mA with attached intermediate transformer (available only for V-PQ 48-250)

# Vario-Series • Square Panel Meters

For Alternating Current or Alternating Voltage 40 ... 50 ... 10 000 Hz



Moving-coil movement with rectifier, 90° or 240° scale

Narrow front frame per DIN 43 718, matt black

'A' = Extra Charge · '+' = Available without extra Charge · '-' = Not available

	Type (90° Scale) Order No. →	PQS 48 W 1670W	V-PQS 72 1601W	V-PQS 96 1604W	PQS 144 1620W
	Type (240° Scale) Order No. →	V-PQ 48-250 1668W	V-PQ 72-250 1602W	V-PQ 96-250 1605W	PQ 144-250 1621W
<b>Alternating Current</b> <sup>1)</sup>	+ ↓				
<b>Range:</b>					
0 ... 100 μA <sup>2)</sup>	CA100	A	A	A	A
0 ... 150 μA	CA150	A	A	A	A
0 ... 250 μA	CA250	A	A	A	A
0 ... 400 μA	CA400	A	A	A	A
0 ... 600 μA	CA600	A	A	A	A
0 ... > 100 μA ... < 1 mA <sup>3)</sup>	CA...	A	A	A	A
0 ... 1 mA	CB1	+	+	+	+
0 ... 1.5 mA	CB1.5	+	+	+	+
0 ... 2.5 mA	CB2.5	+	+	+	+
0 ... 4 mA	CB4	+	+	+	+
0 ... 6 mA	CB6	+	+	+	+
0 ... 10 mA	CB10	+	+	+	+
0 ... 15 mA	CB15	A	A	A	A
0 ... 25 mA	CB25	A	A	A	A
0 ... 40 mA	CB40	A	A	A	A
0 ... 60 mA	CB60	A	A	A	A
0 ... 100 mA	CB100	A	A	A	A
0 ... 150 mA	CB150	A	A	A	A
0 ... 250 mA	CB250	A	A	A	A
0 ... 400 mA	CB400	A	A	A	A
0 ... 600 mA	CB600	A	A	A	A
0 ... > 1 mA ... < 1 A <sup>3)</sup>	CB...	A	A	A	A
0 ... 1 A	CC1	A	A	A	A
0 ... 1.5 A	CC1.5	A	A	A	A
0 ... 2.5 A	CC2.5	A	A	A	A
0 ... 4 A	CC4	A	A	A	A
0 ... > 1 A ... < 5 A <sup>3)</sup>	CC...	A	A	A	A
<b>Connection to Current Transformer</b> <sup>1)</sup>					
...A/1A	complement with CG... or CH...	BE10	A	A	A
...A/5A		BE11	A	A	A
...A/1A } Overload		BE22	A	A	A
...A/5A } 1.2 x of rat. value		BE23	A	A	A
<b>Scale:</b> ↓.....⇒					
1 A	CG1	+	+	+	+
5 A	CG5	+	+	+	+
10 A	CG10	+	+	+	+
15 A	CG15	+	+	+	+
25 A	CG25	+	+	+	+
40 A	CG40	+	+	+	+
60 A	CG60	+	+	+	+
100 A	CG100	+	+	+	+
150 A	CG150	+	+	+	+
250 A	CG250	+	+	+	+
400 A	CG400	+	+	+	+
600 A	CG600	+	+	+	+
0 ... > 1 A ... < 1 kA <sup>3)</sup>	CG...	+	+	+	+
1 kA	CH1	+	+	+	+
1.2 kA	CH1.2	+	+	+	+
1.5 kA	CH1.5	+	+	+	+
> 1 kA <sup>3)</sup>	CH...	+	+	+	+

1) For Type PQS 48 W ≥ 100 mA with separate intermediate transformer

2) Not possible with 240° scales

3) Specify in clear text

# Vario-Series • Square Panel Meters

For Alternating Current or Alternating Voltage 40 ... 50 ... 10 000 Hz



Moving-coil movement with rectifier, 90° or 240° scale

Narrow front frame per DIN 43 718, matt black

'A' = Extra Charge · '+' = Available without extra Charge · '-' = Not available

	Type (90° Scale) Order No. ⇒	PQS 48 W 1670W	V-PQS 72 1601W	V-PQS 96 1604W	PQS 144 1620W	
	Type (240° Scale) Order No. ⇒	V-PQ 48-250 1668W	V-PQ 72-250 1602W	V-PQ 96-250 1605W	PQ 144-250 1621W	
<b>Alternating Voltage</b> Zero Point at left Range:	+ ↓					
0 ... 2.5 V	DC2.5	A	A	A	A	
0 ... 4 V	DC4	A	A	A	A	
0 ... 6 V	DC6	A	A	A	A	
0 ... 10 V	DC10	A	A	A	A	
0 ... 15 V	DC15	A	A	A	A	
0 ... 25 V	DC25	A	A	A	A	
0 ... 40 V	DC40	A	A	A	A	
0 ... 60 V	DC60	A	A	A	A	
0 ... 100 V	DC100	A	A	A	A	
0 ... 150 V	DC150	A	A	A	A	
0 ... 250 V	DC250	A	A	A	A	
0 ... 400 V	DC400	—	A	A	A	
0 ... 500 V	DC500	—	A	A	A	
0 ... 600 V	DC600	—	A	A	A	
0 ... 800 V	DC800	—	A	A	A	
0 ... 1000 V	DC1000	—	A	A	A	
0 ... > 2.5 V < 1000 V <sup>1)</sup>	DC...	A <sup>2)</sup>	A	A	A	
<b>Alternating Voltage</b> Connection to Voltage Transformer						
.../100 V sec.	complement with DG... or DH...	BF12	A	A	A	A
.../110 V sec.		BF15	A	A	A	A
.../100 V } Overload		BF25	A	A	A	A
.../110 V } 1.2 x of rated value		BF26	A	A	A	A
.../250 V		BF18	A	A	A	A
<b>Scale:</b>						
0 ... 500 V	DG500	+	+	+	+	
0 ... 600 V	DG600	+	+	+	+	
0 ... > 500 V < 1 kV <sup>1)</sup>	DG...	+	+	+	+	
0 ... 1 kV	DH1	+	+	+	+	
0 ... 3 kV	DH3	+	+	+	+	
0 ... 5 kV	DH5	+	+	+	+	
0 ... 6 kV	DH6	+	+	+	+	
0 ... 10 kV	DH10	+	+	+	+	
0 ... 15 kV	DH15	+	+	+	+	
0 ... 20 kV	DH20	+	+	+	+	
0 ... 25 kV	DH25	+	+	+	+	
0 ... 30 kV	DH30	+	+	+	+	
0 ... > 1 kV <sup>1)</sup>	DH...	+	+	+	+	

1) Specify in clear text

2) 0 ... > 2.5 V < 300 V

# Vario-Series • Square Panel Meters

For Alternating Current or Alternating Voltage 40 ... 50 ... 10 000 Hz



**Moving-coil movement with rectifier, 90° or 240° scale**  
**Narrow front frame per DIN 43 718, matt black**

**Please note when ordering:**

Only one Identification No. with the same letter sequence may be chosen.

Order No. with Identification No. N (standard model) can be left out.

'N' = Standard Version · 'A' = Extra Charge · '+' = Available without extra Charge · '-' = Not available

	Type (90° Scale) Order No. ⇒	PQS 48 W 1670W	V-PQS 72 1601W	V-PQS 96 1604W	PQS 144 1620W
	Type (240° Scale) Order No. ⇒	V-PQ 48-250 1668W	V-PQ 72-250 1602W	V-PQ 96-250 1605W	PQ 144-250 1621W
<b>MOVEMENT VARIANTS</b>	<b>Identification</b> + ↓				
<b>Nominal Frequency</b>					
Standard (50 Hz)	<b>IK2</b>	N	N	N	N
Nominal Frequency 60 Hz	<b>IK3</b>	A	A	A	A
Calibration for Direct Current (Prot. against reverse pol.)	<b>IK70</b>	A	A	A	A
Nominal Frequency ... Hz <sup>1)</sup> (Frequency within a range of ≥ 40 Hz / < 1 kHz)	<b>IK998</b>	A	A	A	A
Nominal Frequency ... kHz <sup>1)</sup> (Frequency within a range of ≥ 1 kHz / ≤ 10 kHz)	<b>IK999</b>	A	A	A	A
<b>Internal Resistance with Voltmeters</b>					
Standard (see technical data)	<b>IR99</b>	N	N	N	N
Ri approx. 10 kΩ / V (Measuring input ≥ 6 V)	<b>IR10</b>	A	A	A	A
Ri = 1 kΩ / V ± 1% at nom. temperature (Measuring input ≥ 6 V)	<b>IR30</b>	A	A	A	A
Ri = 10 kΩ / V ± 1% at nom. temperature (Measuring input ≥ 6 V)	<b>IR40</b>	A	A	A	A
<b>Potentiometer for Adjustment with Voltmeters</b>					
Voltmeters without potentiometer for adjustment	<b>MP99</b>	N	N	N	N
Voltmeters with potentiometer for adjustment	<b>MP1</b>	—	A	A	A
Adjustment range ± 15 % (Measuring input ≥ 6 V / ≤ 550 V; Ri according to list)					
<b>Position of Use</b>					
Control panel vertical	<b>LA1</b>	N	N	N	N
Control panel horizontal	<b>LA2</b>	+	+	+	+
Other	<b>LA999</b>	+	+	+	+
(Please specify angle between scale and horizontal)					
<b>Special Features</b>					
Normal vibration and shock resistance	<b>LN99</b>	N	N	N	N
Suitable for marine use with the following approvals:					
BV 0591 German Navy	<b>LN1</b>	—	+ <sup>2)</sup>	+ <sup>2)</sup>	+
Germanischer Lloyd	<b>LN2</b>	+	+	+	+
Vibration resis. 2.5 g, Shock resis. 30 g	<b>LN56</b>	+ <sup>3)</sup>	+	+	+
Vibration resis. 5 g, Shock resis. 50 g	<b>LN55</b>	+ <sup>3)</sup>	+	+	+ <sup>4)</sup>

1) Specify in clear text

2) Contains sheet metal housing with cone head rivets (Ident. ML4) and fastener B (Ident. MN11)

3) Available only in combination with screw clip S

4) Available only in combination with fastener B DIN 43835

# Vario-Series • Square Panel Meters

For Alternating Current or Alternating Voltage 40 ... 50 ... 10 000 Hz



## Moving-coil movement with rectifier, 90° or 240° scale

### Narrow front frame per DIN 43 718, matt black

#### Please note when ordering:

Only one Identification No. with the same letter sequence may be chosen.

Order No. with Identification No. N (standard model) can be left out.

'N' = Standard Version · 'A' = Extra Charge · '+' = Available without extra Charge · '-' = Not available

	Type (90° Scale) Order No. ⇒	PQS 48 W 1670W	V-PQS 72 1601W	V-PQS 96 1604W	PQS 144 1620W
	Type (240° Scale) Order No. ⇒	V-PQ 48-250 1668W	V-PQ 72-250 1602W	V-PQ 96-250 1605W	PQ 144-250 1621W
<b>SCALE VARIANTS</b>					
<b>Scale</b>					
In accordance with measuring input	<b>GF99</b>	N	N	N	N
Blank scale (lower & upper marks, co. logo & symbols)	<b>GF24</b>	+	+	+	+
<b>Scale Characteristics</b>					
Current / Voltage linear	<b>SD1</b>	N	N	N	N
According to curve (not current / voltage linear)	<b>SD6</b>	A	A	A	A
<b>Overload</b>					
No Overload	<b>BU99</b>	N	N	N	N
2 x of rated value with built in sat. cur. transformer	<b>BU20</b>	-	A <sup>1) 6)</sup>	A <sup>1)</sup>	A
2 x of rated value with separated sat. cur. transformer	<b>BU21</b>	A	A <sup>2)</sup>	A <sup>2) 6)</sup>	-
5 x of rated value with built in sat. cur. transformer	<b>BU34</b>	-	A <sup>1) 6)</sup>	A <sup>1)</sup>	A
5 x of rated value with separated sat. cur. transformer	<b>BU35</b>	A	A <sup>2)</sup>	A <sup>2) 6)</sup>	-
10 x of rated value with built in sat. cur. transformer	<b>BU44</b>	-	A <sup>3) 6)</sup>	A <sup>3)</sup>	A <sup>4)</sup>
10 x of rated value with separated sat. cur. transformer	<b>BU45</b>	A <sup>4)</sup>	A <sup>4)</sup>	A <sup>4) 6)</sup>	-
<i>Saturation current transformer available only for connection to current transformer (Order No. BE10 and BE11) and only for a nominal frequency of 50 Hz or 60 Hz</i>					
<b>Division and Pointer</b>					
Single division	<b>GD1</b>	N	N	N	N
Double division	<b>GD2</b>	A	A	A	A
Coarse fine division	<b>SE1</b>	N	N	N	N
Fine division	<b>SE3</b>	-	A	A	A
Beam pointer with knife-edge for single division	<b>RA1</b>	N	N	N	N
Beam pointer with knife-edge for double division	<b>RA2</b>	+	+	+	+
Knife-edge pointer for single division	<b>RA10</b>	A	A	A	A
Knife-edge pointer for double division	<b>RA11</b>	A <sup>6)</sup>	A	A	A
Bar indicator <sup>5)</sup> for single division	<b>RA40</b>	A	A	A	A
<b>Additional Imprint</b>					
Second numbering (specify in clear text)	<b>SK992</b>	A	A	A	A
Inscription:					
Without additional inscription	<b>SM99</b>	N	N	N	N
Inscription ≤ 15 characters German	<b>SM991</b>	A	A	A	A
> 15 characters German	<b>SM992</b>	A	A	A	A
≤ 15 characters other language	<b>SM993</b>	A	A	A	A
> 15 characters other language	<b>SM994</b>	A	A	A	A
<i>(Other language in Latin lettering, specify in clear text)</i>					
Coloured mark red RAL 2002 (specify in clear text)	<b>ST991</b>	A	A	A	A
Coloured sectors yellow RAL 1021, green RAL 6018 or red RAL 2002 (specify in clear text)	<b>SU991</b>	A	A	A	A
<b>Scale Characteristics</b>					
Interchangeable scale	<b>SA10</b>	N	N	N	-
Screw mounted scale	<b>SA11</b>	A	A	A	N
Anti-parallax scale (with bar indicator and single division) <sup>5)</sup>	<b>SA5</b>	A	A	A	A

1) Not available with dial illumination

2) Available only with dial illumination

3) Only for connection to transformer sec. 1 A; Not available with dial illumination

4) Only for connection to transformer sec. 1 A

5) Only with 240° Scale

6) Not available with 240° Scale

# Vario-Series • Square Oanel Meters

For Alternating Current or Alternating Voltage 40 ... 50 ... 10 000 Hz



## Moving-coil movement with rectifier, 90° or 240° scale

Narrow front frame per DIN 43 718, matt black

### Please note when ordering:

Only one Identification No. with the same letter sequence may be chosen.

Order No. with Identification No. N (standard model) can be left out.

'N' = Standard Version · 'A' = Extra Charge · '+' = Available without extra Charge · '-' = Not available

	Type (90° Scale) Order No. ⇒	PQS 48 W 1670W	V-PQS 72 1601W	V-PQS 96 1604W	PQS 144 1620W
	Type (240° Scale) Order No. ⇒	V-PQ 48-250 1668W	V-PQ 72-250 1602W	V-PQ 96-250 1605W	PQ 144-250 1621W
<b>SCALE VARIANTS</b>					
<b>Identification</b> + ↓					
<b>Scale / Pointer Colours</b>					
Scale white; imprint and pointer black	<b>SG99</b>	N	N	N	N
Scale black; imprint and pointer white	<b>SG1</b>	A <sup>1)</sup>	A <sup>1)</sup>	A <sup>1)</sup>	A <sup>1)</sup>
Scale black; imprint and pointer yellow	<b>SG2</b>	A <sup>1)</sup>	A <sup>1)</sup>	A <sup>1)</sup>	A <sup>1)</sup>
Scale black; imprint white, pointer yellow	<b>SG3</b>	A <sup>1)</sup>	A <sup>1)</sup>	A <sup>1)</sup>	A <sup>1)</sup>
<b>Dial Illumination</b>					
Without dial illumination	<b>PA99</b>	N	N	N	N
With direct dial illumination (Plexiglass scale, scale and dial illumination white)	<b>PA1</b>	-	A	A	A
<i>Note: Completion with Voltage Order No. PB... necessary. (Dial illumination not available for mirror interchangeable scales and mirror screw mounted scales)</i>					
With indirect dial illumination					
Light conductor with mask, dial illumination white	<b>PA6</b>	-	A	A	A
Light conductor with mask, dial illumination red	<b>PA7</b>	-	A	A	A
<i>Note: Completion with Voltage Order No. PB... necessary. (SG 99 as light conductor with mask not available) Dial illumination available only with screw mounted scale (Order No. SA11).</i>					
<b>Voltage for Dial Illumination</b>					
12 V	<b>PB3</b>	-	+	+	+
24 V	<b>PB5</b>	-	+	+	+
28 V	<b>PB6</b>	-	+	+	+
<b>HOUSING VARIANTS</b>					
<b>Application</b>					
Standard version	<b>LB99</b>	N	N	N	N
Tropic resistant	<b>LB1</b>	A	A	A	A
<b>Protection</b>					
Standard (see technical data)	<b>LH99</b>	N	N	N	N
Front housing-panel protection IP54, clamps IP00	<b>LH21</b>	A	A	A	A
Earthquake-proof (possible combination: LH99 or LH21)	<b>LH10</b>	A	A	A	A
<b>Front Frame Colour</b>					
Matt black	<b>MA2</b>	N	N	N	N
Matt grey RAL 7037	<b>MA11</b>	A	A	A	A
Matt stone grey RAL 7032	<b>MA12</b>	A	A	A	A
Matt light grey RAL 7035	<b>MA14</b>	A	A	A	-
Matt dark beige approx. RAL 1019	<b>MA21</b>	A	A	A	A
<b>Intermediate Frame. Height 3 mm</b>					
Without intermediate frame	<b>MC99</b>	N	N	N	N
Intermediate frame shiny black	<b>MC1</b>	A	A	A	-
Intermediate frame shiny grey RAL 7037	<b>MC2</b>	A	A	A	-
<i>Intermediate frame available only in combination with screw clip S or fastener B DIN 43 835</i>					

1) Additional one-off costs for special scale printing on request

## Vario-Series • Square Panel Meters

For Alternating Current or Alternating Voltage 40 ... 50 ... 10 000 Hz



### Moving-coil movement with rectifier, 90° or 240° scale

Narrow front frame per DIN 43 718, matt black

#### Please note when ordering:

Only one Identification No. with the same letter sequence may be chosen.

Order No. with Identification No. N (standard model) can be left out.

'N' = Standard Version · 'A' = Extra Charge · '+' = Available without extra Charge · '-' = Not available

	Type (90° Scale) Order No. ⇒	PQS 48 W 1670W	V-PQS 72 1601W	V-PQS 96 1604W	PQS 144 1620W
	Type (240° Scale) Order No. ⇒	V-PQ 48-250 1668W	V-PQ 72-250 1602W	V-PQ 96-250 1605W	PQ 144-250 1621W
<b>HOUSING VARIANTS</b>					
<b>Glass Window</b>					
Standard version	MG99	N	N	N	N
Anti-glare glass	MG1	A	A	A	A
<b>Housing</b>					
Standard housing	ML99	N	N	N	N
Sheet metal housing with cone head rivets	ML4	-	A	A	N <sup>1)</sup>
Housing for Mauell-Grid	ML5	+	- <sup>2)</sup>	- <sup>2)</sup>	- <sup>3)</sup>
Housing for H&B Unibloc-Grid	ML6	+ <sup>4)</sup>	- <sup>2)</sup>	- <sup>2)</sup>	- <sup>3)</sup>
<b>Mounting</b>					
2 leaf springs	MN2	N	+	+	-
2 leaf spr. for H&B Unibloc-Grid (bronze springs)	MN4	A	-	-	-
4 leaf springs	MN1	A	A	A	-
Screw Clip S	MN14	A	N <sup>1)</sup>	N <sup>1)</sup>	-
Screw Clip G	MN13	-	-	-	N
Fastener B DIN 43 835	MN11	-	A <sup>5)</sup>	A <sup>5)</sup>	A
Subklew fastener (Screw Clip S without cone point)	MN32	A	A	A	-
Without fastener	MN88	+ <sup>6)</sup>	+	+	+
<b>Identification</b>					
Without identification	MZ99	N	N	N	N
Identification on the back (specify in clear text)	MZ998	A	A	A	A
<b>Marker Pointer</b>					
Without marker pointer	PM99	N	N	N	N
Adjustable red index pointer	PM1	A	A	A	A
<b>Label Strip</b>					
Without label strip	SS99	N	N	N	N
Label on front face (specify in clear text)	SS992	A	A	A	A
<b>Contact Protection</b>					
Without terminal cover	VB99	N	N	N	N
Overall terminal cover	VB2	A	A	A	A
Single terminal cover	VB1	+	+	+	+

1) Standard version without extra charge

2) Standard housing (ML99) in combination with mounting MN2, also suitable for Mauell-Grid and H&B Unibloc-Grid

3) Standard housing (ML99) in combination with mounting MN11, also suitable for Mauell-Grid and H&B Unibloc-Grid

4) Available only in combination with Order No. MN4 (2 leaf springs for H&B Unibloc-Grid)

5) Available only in combination with Order No. ML4 (sheet metal housing with cone head rivets)

6) ML5 (housing for Mauell-Grid) standard version