



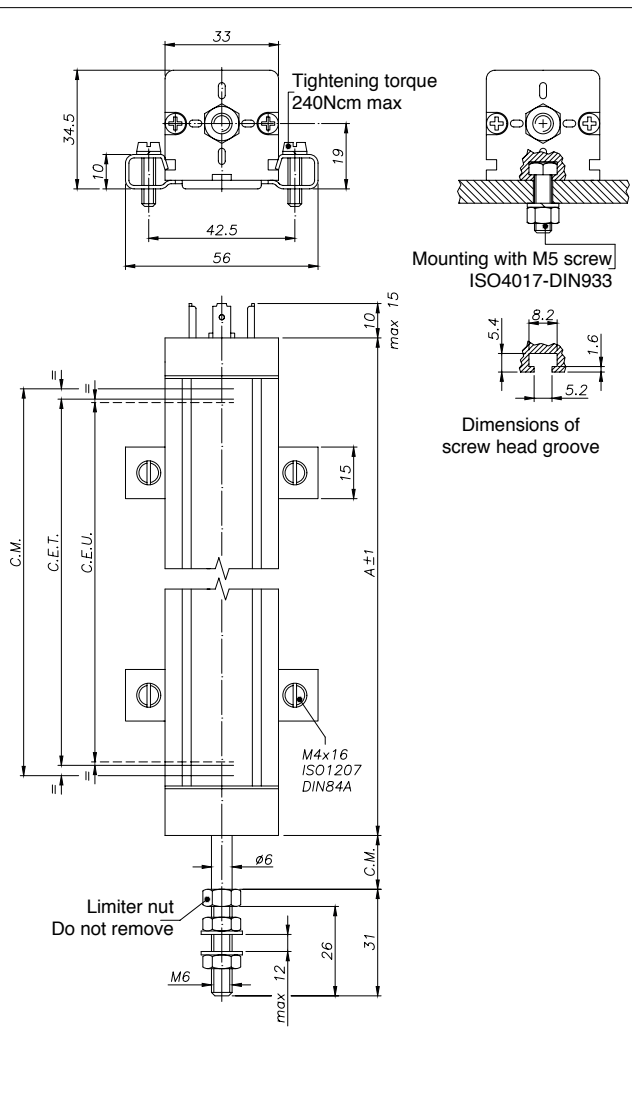
Main features

- *The transducer has been improved in order to guarantee greater reliability under all conditions*
- *A sturdier structure makes the LT series even stronger for applications with heavy vibration*
- *Installation is made simpler by the absence of electrical signal variation in output, outside the Theoretical Electrical Stroke*
- *The new grooves provide an excellent alternative to the usual system of fastening with brackets*
- *Ideal for applications on plastic injection presses, vertical presses, and on many other processing machines*

TECHNICAL DATA

Useful electrical stroke (C.E.U.)	50/75/100/130/150/175/200/225/275/300/ 350/375/400/450/500/600/650/750/900
Independent linearity (within C.E.U.)	± 0.05%
Resolution	Infinite
Repeatability	0.01 mm
Electrical connections	LTM 4-pole connector DIN43650 LTH 3-pole connector LTB 5-pole connector DIN43322 LTF 1 meter 3-pole shielded cable
Displacement speed	Standard ≤ 10 m/s
Protection level	IP60 (IP65 on request)
Life	> 25x10 ⁶ m strokes, or > 100x10 ⁶ maneuvers, whichever is less (within C.E.U.)
Displacement force	3,5N (typical) IP60 version 15N (typical) IP65 version
Vibrations	5...2000Hz, Amax =0.75 mm amax. = 20 g
Shock	50 g, 11ms.
Acceleration	200 m/s ² max (20g)
Tolerance on resistance	± 20%
Recommended cursor current	< 0.1 µA
Maximum cursor current	10mA
Maximum applicable voltage	60V
Electrical isolation	>100MΩ at 500V=, 1bar, 2s
Dielectric strength	< 100µA at 500V~, 50Hz, 2s, 1bar
Dissipation at 40°C (0W at 120°C)	3W
Thermal coefficient of resistance	-200...+ 200 ppm/°C typical
Actual Temperature Coefficient of the output voltage	≤ 5 ppm/°C typical
Working temperature	-30...+100°C
Storage temperature	-50...+120°C
Material for transducer case	Anodised aluminium Nylon 66 G
Material for pull shaft	Stainless steel AISI 303
Mounting	Brackets with adjustable distance between centers or with M5 screw ISO4017-DIN933

MECHANICAL DIMENSIONS

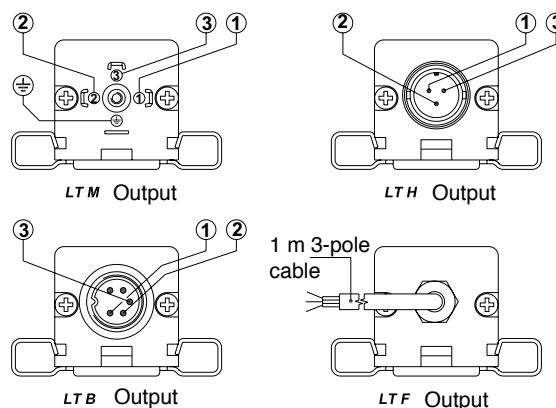
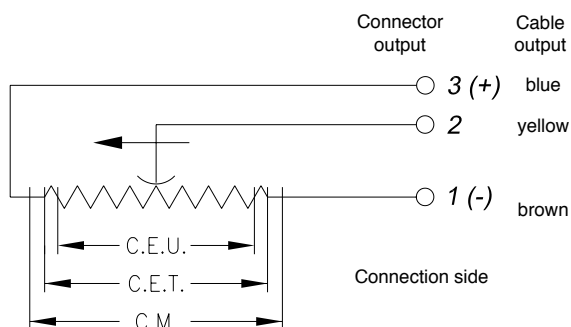


Important: all the data reported in the catalogue linearity, lifetime, temperature coefficient are valid for a sensor utilization as a ratiometric device with a max current across the cursor $I_c \leq 0.1 \mu A$

ELECTRICAL / MECHANICAL DATA

MODEL		50	75	100	130	150	175	200	225	275	300	350	375	400	450	500	600	650	750	900
Useful electric stroke (C.E.U.) +3/-0	mm	50	75	100	130	150	175	200	225	275	300	350	375	400	450	500	600	650	750	900
Theoretical electrical stroke (C.E.T.) ± 1	mm	C.E.U. + 3						C.E.U. + 4				355	380	406	457	508	609	660	762	914
Resistance (C.E.T.)	k Ω	5						5				5	5	5	5	5	5	5	10	10
Mechanical stroke (C.M.)	mm	C.E.U. + 9						C.E.U. + 10				361	386	412	463	518	619	670	772	924
Case length (A)	mm	C.E.U. + 63						C.E.U. + 64				415	440	466	517	572	673	725	826	978

ELECTRICAL CONNECTIONS



• INSTALLATION INSTRUCTIONS

- Make the specified electrical connections (DO NOT use the transducer as a variable resistance)
- When calibrating the transducer, be careful to set the stroke so that the output does not drop below 1% or rise above 99% of the voltage level.

ORDER CODE

The diagram illustrates the components and connection points of the displacement transducer LT. It is divided into two main sections: a left section for connector and cable options, and a right section for additional features and version information.

Left Section Components:

- Displacement transducer LT**: The main unit, represented by a box with a small square icon to its right.
- 4-pole connector output DIN43650 ISO4400**: A box with a small square icon to its right.
- 3-pole connector output**: A box with a small square icon to its right.
- 5-pole connector output DIN43322**: A box with a small square icon to its right.
- 3-pole PVC cable output 3x0,25 1m**: A box with a small square icon to its right.
- Model**: A box with a small square icon to its right.
- IP60 version**: A box with a small square icon to its right.
- IP65 version**: A box with a small square icon to its right.

Right Section Components:

- No certificate attached**: A box with a small square icon to its right.
- Linearity curve to be attached**: A box with a small square icon to its right.
- Cable length: 1 m**: A box with a small square icon to its right.
- Cable length: 2 m**: A box with a small square icon to its right.
- Cable length: 3 m**: A box with a small square icon to its right.
- Other lengths on request**: A box with a small square icon to its right.
- Color of plastic heads (green)**: A box with a small square icon to its right.

Connections:

- The **Displacement transducer LT** is connected to the **4-pole connector output**, **3-pole connector output**, **5-pole connector output**, **3-pole PVC cable output**, and **Model**.
- The **4-pole connector output** is connected to the **No certificate attached** and **Linearity curve to be attached**.
- The **3-pole connector output** is connected to the **Cable length: 1 m**, **Cable length: 2 m**, and **Cable length: 3 m**.
- The **5-pole connector output** is connected to the **Color of plastic heads (green)**.
- The **3-pole PVC cable output** is connected to the **Color of plastic heads (green)**.
- The **Model** is connected to the **Color of plastic heads (green)**.
- The **No certificate attached** and **Linearity curve to be attached** are connected to the **Color of plastic heads (green)**.
- The **Cable length: 1 m**, **Cable length: 2 m**, and **Cable length: 3 m** are connected to the **Color of plastic heads (green)**.
- The **Color of plastic heads (green)** is connected to the **Other lengths on request**.

Example: **LT - M - 0300 - S 000X000X00**

LTdisplacement transducer, 4-pole connector output DIN43650 - ISO 4400, useful electrical stroke (C.E.U.) 300mm. IP60 protection, no certificate attached. green plastic components.

ACCESSORIES

STANDARD	Code
LT mounting kit, 2 brackets, screws	PKIT009
ON REQUEST	Code
LTM 4-pole 90° radial female connector DIN43650 IP65 PG9 clamp for ø6-ø8mm cable	CON006
LTH 3-pole axial female connector IP40 clamp for ø4-ø6mm cable	CON002
LTB 5-pole axial female connector DIN43322 IP40 clamp for ø4-ø6mm cable	CON011
LTB 5-pole axial female connector DIN43322IP65 PG7 clamp for ø4-ø6mm cable	CON012
LTB 5-pole 90° radial female connector DIN43322 IP40 clamp for ø4-ø6mm cable	CON013
Ball connection joint	PKIT015

GEFRAN spa reserves the right to make any kind of design or functional modification at any moment without prior notice

GEFRAN spa
via Sebina, 74
25050 PROVAGLIO D'ISEO (BS) - ITALIA
tel. 0309888.1 - fax. 0309839063
Internet: <http://www.gefran.com>

GEFRAN

DTS LT 02-2019 ENG